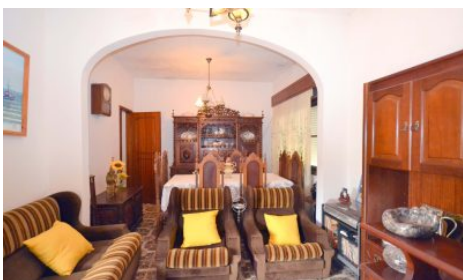




Villa Loulé (São Sebastião)

€ 550,000

Ref: 1009-2410



Four Bedroom Country Villa with Large Garage and Generous Land



4



2



180m²



15090m²



Villa Loulé (São Sebastião)

€ 550,000

Ref: 1009-2410

Four Bedroom Country Villa with Large Garage and Generous Land

Features

- ✓ Energy certificate: Exempt
- ✓ Pantry
- ✓ Water Cistern
- ✓ Septic tank
- ✓ Main drainage
- ✓ Attic
- ✓ Quiet Location
- ✓ Closed fireplace
- ✓ Uninterrupted views
- ✓ Solar orientation: East, West
- ✓ Mains water
- ✓ Garden
- ✓ Balcony
- ✓ Proximity: Mountain, Restaurants, Open field, Public Transport
- ✓ Drive way
- ✓ Fitted wardrobes
- ✓ Conservatory
- ✓ Fireplace
- ✓ Terrace
- ✓ Basement
- ✓ Storage / utility room
- ✓ Views: Countryside views, Mountain views
- ✓ Garage
- ✓ Land zoning: Predominantemente agrícola
- ✓ Rural Property
- ✓ Farmhouse
- ✓ Unfurnished
- ✓ Floors: 2
- ✓ Built year: 1981