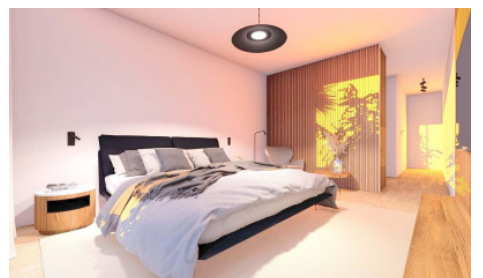
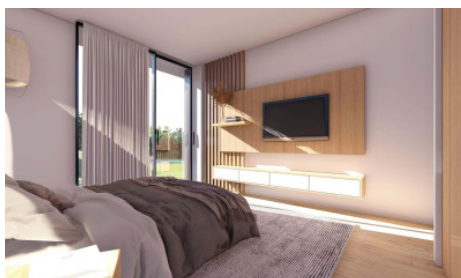




# Maison Alcantarilha e Pêra

€ 1,275,000

Ref: 1009-2291



## Maison Silves



3



4



296m<sup>2</sup>



1114m<sup>2</sup>





## Maison Silves

Large villa has unique and modern design, it is under construction and is located in a elevated position within a rural urbanization.

The property is surrounded by beautiful citrus groves and the Amendoeira Golf Course & Resort is just nearby and Armação de Pêra beach it's a 10 km away.

Good size rooms with an abundance of natural light over the two livable levels and at this construction point it will be possible to choose finishes and colors. It's a turnkey property and will be completely finished with the highest standards, the kitchen will be equipped with the latest materials and appliances.

## Features

- ✓ Energy certificate: Exempt
- ✓ Égout
- ✓ Cuisine équipée
- ✓ Situation calme
- ✓ Barbecue
- ✓ Barbecue
- ✓ Vue imprenable
- ✓ Orientation solaire: Sud, Ouest
- ✓ L'eau du robinet
- ✓ Jardins
- ✓ Climatisation pré installation
- ✓ Les panneaux solaires pré-installation
- ✓ Piscine
- ✓ Proximité: Cours de golf, Champ Ouvrir
- ✓ Entraînement unidirectionnel
- ✓ Armoires encastrées
- ✓ Terrasse
- ✓ Sous-sol
- ✓ Stockage
- ✓ Vue: Vue sur la campagne, Vue sur la montagne, Vue sur la piscine, Vue sur Jardin
- ✓ Garage
- ✓ Land zoning: Aglomerado urbano
- ✓ Rural
- ✓ Contemporary
- ✓ Electric gates
- ✓ Double vitrage
- ✓ Porte de garage électrique
- ✓ Floors: 3
- ✓ Built year: 2023